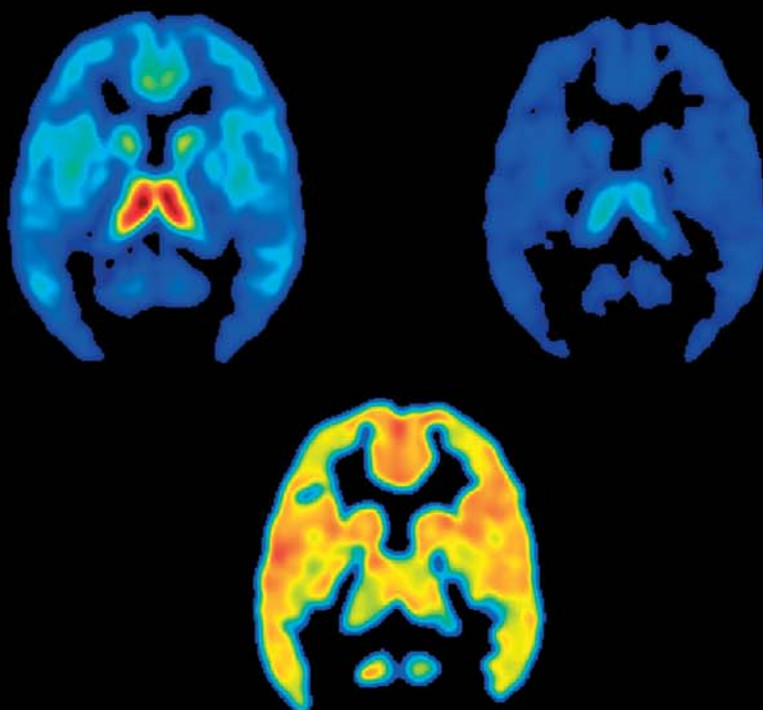


# **X Turku PET Symposium**



**28 – 31 May 2005  
Turku, Finland**

<http://congress.utu.fi/turkupet2005>

**Final Announcement**

## Turku PET Symposium

Dear Colleagues,

It gives us a great pleasure to invite you to Finland to participate in the X Turku PET Symposium, which is going to be held on 28 – 31 May 2005 in Turku, Finland. During the Symposium, Turku PET Centre will also celebrate its 30th anniversary.

The Symposium is targeted to all investigators and staff working with cyclotrons, PET radiochemistry and modeling, as well as PET imaging. The attendance should be particularly useful to those who are new to the field or want to broaden their understanding of the rapidly developing research applications of PET.

One full day will be dedicated to the use of PET in drug development. This Minisymposium will be organized jointly by Turku PET Centre and Turku Imanet, part of GE Healthcare, and will cover, e.g., the current understanding how PET can be used in modern drug development, regulatory and business perspectives and concrete examples from "the real life". The Symposium will be closed with a Round Table Discussion about the future role of PET in drug discovery and development.

We look forward to seeing you in Turku.

Yours sincerely,

*Juhani Knuuti*, Professor  
Chairman of the Organizing Committee

*Harry Scheinin*, Professor  
Scientific Secretary

## Organizing Committee

Juhani Knuuti,  
Chairman  
Harry Scheinin,  
Scientific Secretary  
Jörgen Bergman  
Olli Eskola  
Tove Grönroos  
Merja Haaparanta-Solin  
Semi Helin  
Sven-Johan Heselius  
Jarmo Hietala  
Patricia Iozzo  
Mirja Jyrkinen  
Valtteri Kaasinen  
Mikko Kankaanpää  
Nina Lauren  
Heikki Minn  
Pirjo Nuutila  
Kjell Nägren  
Vesa Oikonen  
Juha Rinne  
Anne Roivainen  
Nina Savisto  
Marko Seppänen  
Hannu Sipilä  
Olof Solin  
Mika Teräs  
Tuula Tolvanen

Saturday 28 May 2005	Sunday 29 May 2005	Monday 30 May 2005	Tuesday 31 May 2005
	<p><b>08.00 Registration</b> <b>09.00 – 11.00 Radionuclide Production and Radiochemistry</b> <i>Moderator: Kjell Nägren</i> <i>Chairmen: Kjell Nägren, Olof Solin</i> 09.00 <i>Dr. Andrew Roberts, Manchester, UK:</i> High power targets for PET-radionuclide production 09.30 <i>Prof. Kazutoshi Suzuki, Chiba, Japan:</i> Development of automated devices for the production of <sup>11</sup>C- radiopharmaceuticals with high specific radioactivity 10.00 <i>Prof. Frédéric Dollé, Orsay, France:</i> Methods in <sup>18</sup>F-labeling of PET-radiotracers with special emphasis on <sup>18</sup>F-pyridines 10.30 Oral free presentations</p> <p><b>11.00 Coffee break</b> Poster exhibition, Commercial exhibition</p> <p><b>11.45 – 13.45 Instrumentation</b> <i>Moderator: Mika Teräs</i> <i>Chairmen: Mika Teräs, Heikki Minn</i> <b>Present Tools for High Resolution PET</b> 11.45 <i>Dr. Sybille Ziegler, Munich, Germany:</i> PET and PET/CT systems 12.15 <i>Prof. Adriaan Lammertsma, Amsterdam, The Netherlands:</i> Dedicated Brain Scanners - Opportunities and Pitfalls <b>Clinical PET</b> 12.45 <i>Prof. Sasa Mutic, St.Louis, USA:</i> PET/CT in radiotherapy treatment planning 13.15 Oral free presentations</p> <p><b>13.45 Lunch</b> Poster exhibition, Commercial exhibition</p> <p><b>15.00 – 16.30 Modeling</b> <i>Moderator: Vesa Oikonen</i> <i>Chairmen: Vesa Oikonen, Ulla Ruotsalainen</i> 15.00 <i>Prof. Gitte Moos Knudsen, Copenhagen, Denmark:</i> Emission tomographic method for pharmacological research 15.30 <i>Dr. Vin Cunningham, GSK, Stevenage, UK:</i> Reference tissue input models 16.00–16.30 Oral free presentations</p>	<p><b>08.00 – 10.00 Preclinical and Molecular Imaging</b> <i>Moderator: Merja Haaparanta-Solin</i> <i>Chairmen: Merja Haaparanta-Solin, Anne Roivainen</i> 08.00 <i>Dr. Donald Burns, Merck Research Laboratories, West Point, USA:</i> Preclinical PET Imaging in CNS Drug Discovery and Development 08.30 <i>Dr. Ian Wilson, Turku Imanet, Turku, Finland:</i> Preclinical evaluation of PET tracers 09.00 <i>Dr. Andreas Jacobs, Cologne, Germany:</i> Molecular imaging in oncology 09.30 Oral free presentations</p> <p><b>10.00 Coffee break, visit to Pet Centre</b> Poster exhibition, Commercial exhibition</p> <p><b>11.30 – 13.30 Cardiology and Metabolism</b> <i>Moderator: Pirjo Nuutila</i> <i>Chairmen: Juhani Knuuti, Pirjo Nuutila</i> 11.30 <i>Dr. Patricia Iozzo, Turku, Finland and Pisa, Italy:</i> New targets and tools in metabolic imaging 12.00 <i>Dr. Frank Bengel, Munich, Germany:</i> Molecular imaging in cardiology 12.30 <i>Dr. Philipp Kauffman, Zurich, Switzerland:</i> PET and multislice-CT: The future of nuclear cardiology? 13.00 Oral free presentations</p> <p><b>13.30 Lunch</b> Poster exhibition, Commercial exhibition</p> <p><b>15.00 – 17.00 Neurotransmission</b> <i>Moderator: Jarmo Hietala</i> <i>Chairmen: Jarmo Hietala, Juha Rinne</i> 15.00 <i>Prof. Robert Innis, Bethesda, USA:</i> Development and validation of new PET tracers for brain research 15.30 <i>Prof. Lars Farde, Stockholm, Sweden:</i> Imaging of specific neurotransmitter systems: beyond receptors 16.00 <i>Prof. David Brooks, Hammersmith Hospital, London, UK:</i> Imaging of neuroinflammation 16.30–17.00 Oral free presentations</p>	<p><b>08.00 – 15.30 Drug Development Minisymposium</b> organized jointly by Turku PET Centre and Turku Imanet <i>Moderator: Harry Scheinin</i> <i>Chairmen: Harry Scheinin, Juha Rinne, Aki Laakso, Ian Wilson</i> <b>08.00 – 09.30 Possibilities of Using PET in Modern Drug Development</b> 08.00 <i>Prof. Lars Farde, Stockholm, Sweden:</i> General principles 08.30 <i>Dr. Tim McCarthy, Pfizer Inc., Groton, CT, USA:</i> Role of PET in therapeutic drug development 09.00 <i>Dr. Richard Hargreaves, Merck, West Point, USA:</i> Imaging in psychiatry drug development</p> <p><b>09.30 Coffee break</b> Poster exhibition, Commercial exhibition</p> <p><b>10.00 – 11.30 Regulatory and Business Perspectives</b> 10.00 <i>Prof. Mats Bergström, Uppsala Imanet, Uppsala, Sweden:</i> The microdosing concept – current understanding 10.30 <i>Dr. George Mills, Bethesda, USA:</i> FDA – Discussion of the use of PET tracers in drug development 11.00 <i>Dr. Alex Gibson, GE Healthcare, Amersham, UK:</i> Commercializing of PET radiopharmaceuticals</p> <p><b>11.30 Lunch</b> Poster exhibition, Commercial exhibition</p> <p><b>13.00 – 14.00 Practical Examples of Using PET in Drug Development</b> 13.00 <i>Dr. Antero Kallio, BioTie, Turku, Finland:</i> Nalmefene 13.15 <i>Dr. Richard Hargreaves, Merck, USA:</i> Aprepitant 13.30 <i>Dr. Andrew Zambanini, GSK, Harlow, Essex, UK:</i> Rosiglitazone 13.45 <i>Dr. Gill Farrar, GE Healthcare, Amersham, UK:</i> ALZ 101</p> <p><b>14.00 – 15.30 Round Table Discussion: Future Role of PET in drug discovery and development</b> <i>Chairmen: Harry Scheinin and Kari Aranko</i> <i>Prof. Bengt Långström, Prof. Lars Farde, Dr. George Mills, Dr. Tim McCarthy, Dr. Antero Kallio</i> <b>15.30 Closing of the Symposium</b></p>
<b>Get-together Party</b> Registration	<b>Sauna Party</b>	<b>Congress Banquet</b>	

# Final Announcement

## General Information

### ■ Travelling and Weather

Turku is within an easy reach by air via Helsinki, Stockholm or Copenhagen. From the Helsinki-Vantaa airport there is also a shuttle bus to Turku (2½ hours, departures every hour). From Stockholm you may choose to travel to Turku on a ferry through one of the most beautiful archipelagos in the world. Daily connections between Stockholm and Turku are operated by Silja Line and Viking Line. For more information about Turku and travel connections, please consult the website: [www.turku.fi](http://www.turku.fi). More weblinks also on the Symposium website [www.congress.utu.fi/turkupet2005](http://www.congress.utu.fi/turkupet2005).

Weather forecasts can be found at [www.foreca.com](http://www.foreca.com).

### ■ Venue and Accommodation

The symposium venue, Educarium building of the University of Turku, is within a walking distance from the city centre (1.5 km) and from the symposium hotels. Address: Assistentinkatu 5.

The symposium hotels Sokos Hotel Hamburger Börs, Centro Hotel and Scandic hotels Plaza and Julia are in the city centre, the Hotel Karina in the east side of the city and the spa hotel Holiday Club Caribia is next to the Turku University's student village, only a few minute walk from the Educarium building.

Accommodation reservations can be made on the registration form found on the Symposium website.

### ■ Language

The official language of the Symposium is English, no simultaneous translation will be provided.

### ■ Abstract Submission

We welcome abstracts for oral and poster presentation. Abstracts are submitted electronically via the submission system on the Symposium website at [www.congress.utu.fi/turkupet2005](http://www.congress.utu.fi/turkupet2005). The deadline for submission is March 1, 2005. Authors will be notified of acceptance on March 21, 2005. All accepted contributions will be printed in the Abstract Book and published in the Annales Universitatis Aboensis series.

### ■ Exhibition

A commercial exhibition will be held during the Symposium. For further information, please contact the Congress Office.

### ■ Registration

To register for the Symposium, please fill in the registration form on the Symposium website at [www.congress.utu.fi/turkupet2005](http://www.congress.utu.fi/turkupet2005). Please indicate all the events you will attend in the scientific as well as in the social program. Note that registration for the events will be confirmed upon payment on a "first come, first served" basis.

The Symposium fees include the scientific program, symposium material, lunches and coffee at the symposium venue as well as the Get Together Party on Saturday, May 28 and the Sauna Party on Sunday, May 29. The fees can be found on the registration form. Please note that the late registration fees, after April 4, 2005, are higher.

For registration on-site and on-site payments cash, Visa, Mastercard and Eurocard are accepted.

### ■ Confirmation

All registrants will receive a confirmation letter from the Congress Office. The Abstract Book and other material will be handed out at the registration desk.

### ■ Cancellation of Registration and Accommodation

Cancellation must be made in writing (letter, fax or email) to the Congress Office before 30 April 2005. No fees will be refunded after this date. A processing fee of 50 EUR will be deducted from all refunds.

### ■ Further Information

Updated information is available on the Symposium website [www.congress.utu.fi/turkupet2005](http://www.congress.utu.fi/turkupet2005). All correspondence concerning registration, payments, travelling or accommodation should be directed to Congress Office. Further information about the scientific programme can be obtained from Professor Harry Scheinin [harry.scheinin@utu.fi](mailto:harry.scheinin@utu.fi)

**University of Turku**  
**Congress Office/PET2005**  
Lemminkäisenkatu 14-18 B  
FIN-20520 Turku, Finland  
Tel. int. +358 2 333 6342  
Fax int. +358 2 333 5008  
Email: [congress@utu.fi](mailto:congress@utu.fi)

## Social Programme

### ■ GET-TOGETHER PARTY

Educarium building (congress venue)  
Saturday, May 28<sup>th</sup> at 6:00 p.m.  
Free participation

The Turku PET Symposium starts off with a Get-Together party hosted by the City of Turku. Come and meet some old friends and make new ones. A light dinner and refreshments will be served with live music.

### ■ SAUNA PARTY

Naantali, Metsä Jukola  
Sunday, May 29<sup>th</sup>  
Free participation

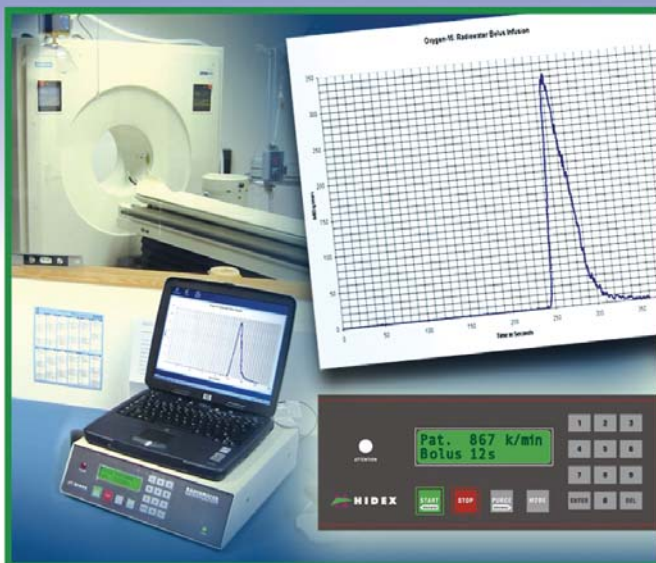
A traditional and very popular sauna party is held on Sunday evening in Naantali at Metsä Jukola. During the evening you can bath in sauna, enjoy the beautiful scenery of archipelago and take part in different outdoor games. Buffet dinner is included. Please note that the number of participants in the Sauna Party is limited and places are filled in order of registration, so register early!

### ■ BANQUET

Turku Castle  
Monday, May 30<sup>th</sup>  
Tickets 48 €

You are invited to an old days experience dating back to year 1585 in the Turku Castle. Returning from a fortunate hunting trip the cheery Hunting master Pietari Olavinpoika sets up a medieval banquet for all the folks from the peasantry to the courtiers. The sponsored price covers transportation, eventful programme and servings between the scenes.

## Improving PET research possibilities



**HIDEX Oy** has developed in collaboration with the Turku PET Centre, an automated radiowater production and infusion module.

### Advantages of the new system:

- Disposable sterile components – GMP compatible
- Remote controlled automatic i.v. injection
- Increased patient safety
- Decreased staff radiation exposure



Information: [info@hidex.com](mailto:info@hidex.com)  
[www.hidex.com](http://www.hidex.com)